

Ph. : 26967842, 26868681
Fax : 26865206

e-mail : nrpccomml@yahoo.com
Website : www.nrpc.gov.in

भारत सरकार
उत्तर क्षेत्रीय विद्युत समिति
18-ए, शहीद जीत सिंह मार्ग, कटवारिया सराय, नई दिल्ली – 110016
Government of India

Northern Regional Power Committee
18-A, Shaheed Jeet Singh Marg, Katwaria Sarai, New Delhi-110016

पत्रांक : उ.क्षे.विस./अधी.अभि.(वा.)/21-वा.उ.स./12/ 4290-4315
No. NRPC/SE(C)/21-CSC/12/

दिनांक : 13.01.2012
Dated : 13.01.2012

सेवा में,
To,

वाणिज्यिक उप-समिति के सदस्य
(संलग्न सूची के अनुसार)
Members of Commercial Sub-committee
(As per list attached)

विषय : वाणिज्यिक उप-समिति की 21 वीं बैठक का कार्यसूची ।
Subject : 21st meeting of Commercial Sub-committee – Agenda.

महोदय ,
Sir,

जैसाकि हमारे पत्र सम संख्या दिनांक 28.12.2011 में सूचित किया जा चुका है कि वाणिज्यिक उप-समिति की 21 वीं बैठक दिनांक 20 जनवरी , 2012 को पूर्वाह्न 11.00 बजे सम्मेलन कक्ष , उत्तरी क्षेत्रीय विद्युत समिति, नई दिल्ली में आयोजित की जायेगी । इस बैठक की कार्यसूची उत्तरी क्षेत्रीय विद्युत समिति की वेबसाइट पर उपलब्ध है । इसे आप डाउनलोड कर सकते हैं । आप से अनुरोध है कि बैठक में सम्मिलित होकर अनुग्रहीत करें ।

As already intimated vide our letter of even no. dated 28.12.2011, the 21st Commercial sub-Committee meeting of NRPC will be held on 20th January, 2012 at 11.00 Hrs. in the Conference Hall, NRPC, New Delhi. A copy of the agenda for the meetings is available on NRPC website. The same may be downloaded. You are requested to make it convenient to attend the meeting.

संलग्न यथोपरि ।
Encl. : As above.

भवदीय /Yours faithfully,

प्रकाश मस्के
13/01/2012

(पी.एस.मस्के)
(P.S. Mhaske)

अधीक्षण अभियंता (वाणिज्य)
Superintending Engineer (Comml.)

AGENDA

FOR

21st MEETING OF COMMERCIAL SUB-COMMITTEE

Time of meeting : 11.00 AM.
Date of meeting : 20th January 2012 (Friday).
Venue : Conference Hall, NRPC, New Delhi.

Item-1 CONFIRMATION OF MINUTES OF 20th MEETING OF COMMERCIAL SUB-COMMITTEE OF NRPC:

The minutes of 20th meeting of Commercial Sub-committee held on 24th August, 2011 were circulated vide letter No. NRPC / SE(C) /20-CSC / 11 / 2581-2606 dated 27th September, 2011. Since, no comments have been received on the minutes, the Sub-committee may like to confirm the same.

Item-2 Presentation on methodology for preparation of Regional Transmission Account and Regional Transmission Deviation Account by NRPC Sectt.

Item-3 STATUS OF UI CHARGES:

As per the information received from NRLDC, the status of payment of UI charges payable/Receivable by the utilities as on 31.12.2011 of the current financial year is is given below:

Rs. In Lakh

		Principal UI Charges	Interest on UI charges	Principal + Interest
S.No	Utility Name	Net UI Payable(+) or Receivable(-) as on 31.12.2011	UI Interest Payable(+) or Receivable(-) as on 31.12.2011	Net Payable(+) or Receivable(-) as on 31.12.2011
		1	2	3=1+2
1	Chandigarh	-508.73382	0.00000	-508.73382
2	Delhi	-20233.95093	0.00000	-20233.95093
3	Haryana	-2318.86797	0.00000	-2318.86797
4	Himachal Pradesh	3.41832	0.00000	3.41832
5	JK	34296.99691	1847.31249	36144.30940
6	Punjab	9029.60905	0.00000	9029.60905
7	Railways	-69.78847	0.00000	-69.78847
8	Rajasthan	0.00000	0.00000	0.00000
9	Uttar Pradesh	86158.61092	0.00000	86158.61092
10	Uttarakhand	0.00000	0.00000	0.00000

11	NHPC Ltd	-3761.40801	0.00000	-3761.40801
12	NTPC Ltd	-4688.80498	0.00000	-4688.80498
13	SJVN Ltd	-1033.19530	0.00000	-1033.19530
14	THDC India Ltd	-1263.70248	0.00000	-1263.70248
15	ER	-5699.26998	-645.46659	-6344.73657
16	WR	0.00291	-253.55879	-253.55588
17	Pool Balance	-92894.56690	1193.17388	-91701.39302

i) These figures are based on UI regulations of CERC. However, the differential amount of Rs. 16039.76272 Lakh is there due to different UI ceiling rate as per CERC Regulation on UI Charges and High Court of Allahabd, Lucknow bench order dated 2.5.2008 and CERC order dated 29.5.2008 for implementation of High Court order which is subject to review based on the conclusion of the proceeding in the matter presently pending in High Court.

ii) The additional UI charges of UP for the FY 2009-10 and up to week 5 of FY 2010-11 are Rs.21085.71003 Lakh as per CERC Regulation on UI Charges which UPPCL was not required to pay in pursuance of High Court of Allahabd, Lucknow bench order dated 12.11.2009 and CERC order dated 03.12.2010

iii) Accordingly the outstanding UI charges of UP is only Rs. 49033.13817 Lakh (Including interest)

Item-3.1 UI charges outstanding against UP:

As on 31.12.2011, UPPCL is to pay net UI charges Rs. 49033.13817 lakh considering the various High Court of Allahabd, Lucknow bench orders CERC orders mentioned in the status above.

UPPCL may update the status.

Item-3.2 UI charges outstanding against J&K:

As on 31.12.2011, J&K is to pay net UI charges (including interest on delayed payment UI charges) Rs. 36144.30940 lakh including interest of Rs. 1847.31249 Lakh.

PDD, J&K may update the status.

Item-4 STATUS OF REACTIVE ENERGY (RE) CHARGES

As per the information received from NRLDC, the status of payment of Reactive Energy charges payable/Receivable by the utilities as on 31.12.2011 of the current financial year is given below:

Name of utility	Cumulative Upto FY 2010-11		Rs. In Lakh
	Principal RE Charges payable(+)/ receivable (-) by the utilities	Interest on RE charges payable(+)/ receivable (-) by the utilities	Outstanding RE receivable (-) / payable (+) from / to the pool a/c as on 31.12.2011
	1		2
CHANDIGARH	-94.20666	-160.74663	-56.13374
DELHI	54.54014	-186.71985	-240.37362
HARYANA	-2410.56044	-1650.72051	-984.9245
H.P.	-189.64559	-145.41560	-80.13871
J&K	6660.45663	4274.71573	2262.27669
PUNJAB	-523.74051	-528.29483	131.35405
RAJASTHAN	-372.38630	-796.14026	-1048.13159
U.P.	-1762.96795	-805.84491	-4265.49916
UTTARAKHAND	-2.85426	-0.83314	11.07833

Item-4.1 Reactive energy charges outstanding against J&K:

As on 31.12.2011, the outstanding Reactive Energy Charges (principal amount) against J&K were Rs 2262.27669 Lakh during the Financial Year 2011-12.

In addition to outstanding during current FY, there is an outstanding Reactive Energy Charges of Rs. 10935.17236 Lakh including interest of Rs 4274.71573 Lakh against PDD, J&K upto FY 2010-11.

NRPC had already approved Rs 22 Crs from Reactive pool account of NR to J&K for installation of capacitors. The PDD, J&K had also submitted Project Report for the installation of Capacitors. NRPC vide letter dated 18.06.2008 requested PDD, J&K to take action for procurement of the shunt capacitors as proposed under phase-I.

J&K may update the status regarding installation of capacitors and payment of outstanding Reactive Energy Charges.

Item-5 DELAY IN SUBMISSION OF SEM DATA BY CONSTITUENTS TO NRLDC (Agenda by NRLDC)

- a) NRLDC have informed that Special Energy Meter (SEM) data sent to NRLDC by the Constituents are delayed every week. As per Part-6 "SCHEDULING AND DISPATCH CODE" Clause No 6.4.21 of Grid Code applicable w.e.f. 3.5.2010, *"All concerned entities (in whose premises the special energy meters are installed) shall take weekly meter readings and transmit them to the RLDC by Tuesday noon. The SLDC must ensure that the meter data from all installations within their control area are transmitted to the RLDC within the above schedule."*

The above issue is being deliberated in every Commercial Sub-committee meeting. Still there has been delay in submission of SEM data by various utilities. NRLDC have informed that SEM data from the following locations are being received late regularly to NRLDC since last three months.

UPPCL - Bina, Sultanpur, Simboli, CB Ganj, 220 kV Moradabad/ Sambhal, Rihand HEP

RVPNL - Khetri , Merta, Jodhpur

UPCL - Kulhal, Dhalipur, Dhakrani, Roorkee, Bahwanpur, Laskar, Manglore

PGCIL - Abdullahpur, Ludhiana

PDD - Jammu, Hiranagar, Burn, Pampore

In case of non receipt of SEM data by Tuesday (A/N), processing and validation will be carried out by NRLDC by using other end data. The status of late receipt of data by NRLDC from constituents is attached at **Annexure I**.

- b) NRLDC have informed that SEM data for the Meters as detailed at **Annexure-II** are not being received since long, Constituents may update the status.

It is observed that feeder is under shutdown since long and comes back in service but neither SEM data nor information come to NRLDC, which causes wrong calculation of Utilities drawl. It is requested to all the Utilities that if they are not sending the SEM data of any feeder they have to timely convey the status of feeder (power flow status) to NRLDC to avoid any error in energy accounting. This matter was deliberated in last commercial meeting also.

The above matter was deliberated during 20th Commercial sub-committee meeting held on 24.08.2011 and it was decided that where ever the interface meters were installed, the meter data would be sent to NRLDC by the Constituents.

Members may update the status.

Item-6 TIME CORRECTION OF SEMs

As per recent list given by NRLDC (for the week 26.12.2011 to 01.01.2012), time correction is required in 386 nos. of meters out of about 1300 meters installed in Northern Region.

The matter was discussed in the 20th Commercial Sub-committee meeting held on 24.08.2011. It was decided that all constituents would promptly send information regularly to NRLDC to avoid errors in energy accounting. POWERGRID would discuss problem pertaining to time synchronisation with meter manufacturer and intimate to the members within two weeks.

NRLDC/ POWERGRID may update the status.

Item-7 Automatic Meter Reading (AMR) from Interface Meters

To overcome the problem of late submission of Interface Meters data by constituents to NRLDC, the scheme of AMR was approved by NRPC in its 14th meeting held on 19.9.2009. In the 15th NRPC meeting held on 24.12.2009 it was decided that the AMR scheme would be implemented by POWERGRID as a new project and tariff including O&M charges as determined by CERC would be borne by the beneficiaries of Northern Region.

During 21st TCC and 24th NRPC meeting held on 17th and 18th November 2011, representative of POWERGRID informed that bids received from five vendors were under evaluation and order would be placed by December 2011. The list of 75 critical locations from where data was getting delayed had been received from NRLDC and installation of AMRs at these critical locations would be taken up first. The implementation of AMRs would be done in a phased manner and completed by 15th October 2012.

POWERGRID may update the status of implementation.

Item-8 OPENING OF LETTER OF CREDIT (LC) AGAINST UI CHARGES LIABILITY (Agenda by NRLDC)

CERC has issued Unscheduled Interchange charges and related matters (Amendment) Regulations, 2010 vide notification no. L-1(1)/2009-CERC dated 28th April, 2010 implemented w.e.f. 03.05.2010. Regulation 10(4) of the principal Regulations is reproduced below:

“All regional entities which had at any time during the previous financial year failed to make payment of unscheduled Interchange charges including Additional Unscheduled Interchange charges within the time specified in this regulation shall be required to open a Letter of Credit (LC) equal to 110% of its average payable weekly UI liability in the previous financial year, in favour of the concerned RLDC within a fortnight from the date these Regulations come into force

Provided further that LC amount shall be increased to 100% of the payable weekly liability in any week during the year, if it exceeds the previous LC amount by more than 50%. ”

During the 20th Commercial Sub-committee meeting held on 24.08.2011 it was decided that all the defaulting constituents would open LC as required under CERC Regulations.

Present LC opening status is given below:

Sl. No	Name of NR Pool members	LC Amount (Rupees in Crores)	Status	Remarks	No of defaults in UI Payment in 2010-11	No of defaults in UI Payment in 2011-12
1	PSTCL, Punjab	21.05	LC opened	LC Opened	32	
2	UPPCL,UP	190.58	LC not opened	LC to be Opened	12	8
3	UPCL,UTTARA-KHAND	6.56	LC opened	LC Opened	16	
4	PDD,J&K	24.18	LC not opened	LC to be Opened	30	19
5	UT Chandigarh	8.61	LC opened	LC Opened	9	
6.	HPSEB	2.54	LC Opened	LC Opened	1	

Members may update the status.

Item-9 Payment of NRLDC FEE & Charges (Agenda by NRLDC)

NRLDC has raised the bills towards NRLDC fee and charges from Oct., 2010 to Sept., 2011 period. The bills have been raised as per the Order dtd. 11th March, 2011 passed by CERC in petition No. 91/2010 for the control period 2009 – 14 in accordance with CERC (Fee and charges of Regional Load Despatch Centre and other related matters) Regulations, 2009.

The status of payments received/ outstanding for 2009-10 and 2010-11 are attached as **Annexure-III and IV** respectively

The users are requested to clear the outstanding amount at the earliest. As per CERC Regulation any delay beyond sixty days from the date of billing, a late payment surcharge of 1.25% per month shall be levied.

It has been observed that most of the users are not intimating the details of payment made by them i.e. TDS deduction, Rebate deduction (if any), bill month against which amount has been credited by them alongwith date on which payment has been credited. The users are requested to intimate these details in time as the same is necessary for reconciling the amount received.

Item-10 Information of UI/reactive payment in NR pool account (Agenda by NRLDC)

The matter regarding furnishing of information of UI/reactive payment in NR pool account was deliberated in last commercial meeting also. Rajasthan, UP, Haryana, Railways, AD Hydro, NTPC are furnishing the details of payment being

made by them in UI /Reactive pool A/C. Rest of the NR pool members are again requested to intimate the details of payment being made by them in the format given below:

Email account:
nrpool2010@gmail.com

Sl.No	Name of Utility	Amount	UI/Reactive account Week No	Date	Cheque No	Mode of Payment

Item-11 LC status of RLDC Fee and Charges (Agenda by NRLDC)

All the users through various letters, were requested to open LC for payment of NRLDC Fee and Charges. The matter regarding opening of LC was also deliberated in Commercial Committee Meeting at Jaipur on 24.08.2011 and TCC/NRPC meeting at Mahabaleshwar. Rebate of 2% is admissible on immediate payment through RTGS and keeping LC as backup (for payment security).

The list of users who have opened LC is indicated in **Annexure V A**. The list of users who are required to open LC is indicated in **Annex-V B**. **The users who have not opened LC so far are requested to open the LC at the earliest.**

Item-12 Reconciliation of NRLDC Fee and charges (Agenda by NRLDC)

NRLDC vide letter dtd. 20.12.2011 has sent the reconciliation statements of NRLDC Fee and Charges for the period Oct., 2010 – June, 2011 to all the users. The users were requested to send the duly signed and verified copy of reconciliation statement by 13.01.2012. As on 11.1.2012 Rihand I, Rihand II, Sewa HE Project, Karcham Wangtoo HE Project & A D Hydro have sent the verified & signed copies of statements. In case of non receipt of any comments/verified reconciliation statements from the balance users up to 13.1.12 it will be presumed that statement stands reconciled.

Item-13 Reconciliation of UI Account (Agenda by NRLDC)

NRLDC has uploaded the reconciliation statement of UI accounts in its website for the period April, 11 to Sept., 2011. The constituents are requested to verify /check the same & comments if any on the same may please be reported to DGM (MO), NRLDC by 19.01.2012.

Item-14 Availability of SEMs and DCDs (Agenda by NRLDC)

NRLDC vide its IOM dated. 10.1.2011 has given the requisition for SEMs and DCDs to NR-I POWERGRID for the 2011-12. **POWERGRID NR-I may update the status of availability of SEMs and DCDs.**

Constituents are requested to intimate the list of new transmission system elements likely to be commissioned in next three months and also update the requirement of SEMs and DCDs for 2012-13 .

Item-15 Inter State Transmission losses in NR (Agenda by NRLDC)

As per the trend prevailing in previous years, transmission losses during winter period are more as compared to summer seasons. For injections & drawl, the list of points being used for injections / drawal points alongwith their CT/PT ratios have been uploaded in NRLDC website. The constituents are requested to check their drawal / injection points and CT/PT ratios being used. Comments, if any, on any of the same may please be communicated to NRLDC at the earliest.

Item-16 Non payment of Congestion Charges (Agenda by NRLDC)

NRPC has issued congestion charge A/C for the week 18th to 24th July 2011 on 12.08.2011. Aravali power Co. Pvt. Ltd. is yet to release the payment against the congestion charges. Aravali power Co. Pvt. Ltd. is requested to release the payment against the congestion charges at the earliest. As per the regulation the defaulting constituents shall have to pay simple interest @0.04% each day of delay.

Item-17 Agenda by NHPC

Item-17.1 Outstanding Dues of NHPC for more than 60 days:

As on 03.01.2012, the following outstanding amounts of NHPC are dues from respective beneficiaries for more than 60 days :

i) PSPCL (Punjab)	Rs 81.71 Crs
ii) UPPCL (UP)	Rs. 282.65 Crs
iii) JVVNL (Rajsthan)	Rs. 56.79 Crs
iv) BRPL	Rs. 224.59 Crs
v) BYPL	Rs . 152.81 Crs

Beneficiaries are requested to liquidate the outstanding amount at the earliest.

Item-17.2 Signing of PPA of Subansiri H.E. Project & renewal of BPSA in respect of all operating Power Stations of NHPC:

NHPC have sent drafts of Power Purchase Agreement (PPA) & Bulk Power Supply Agreement (BPSA) in respect of 93 MW allocated power to Rajasthan out of 500 MW allocated to Northern Region from Subansiri HE project and all operating power Stations on dated 12.01.2010 (Superseding the Draft sent on 21.07.2009) and 02.01.2008 respectively. Thereafter, Rajasthan Discom Power Purchase Committee (RDPPC) vide letter dated 08.06.2010 suggested some modifications in the clauses which have already been accepted by NHPC. Till

date consent for signing the PPA & BPSA are awaited.

RDPCC may update the status.

Item-17.3 Opening/Revalidation of Letter of Credit (LC) by BRPL & BYPL:

Validity of LC opened by BRPL & BYPL was lapsed on 31st March 2011. In spite of regular follow up and appraising the amount of LC to be opened by them from time to time, these Discoms of Delhi have not opened LCs so far.

BRPL & BYPL are requested to revalidate /open the fresh LC at the earliest.

Item-18 Agenda by POWERGRID

Item-18.1 Opening of LC by PDD-J&K

PDD-J&K has not opened Irrevocable Letter of Credit, which is mandatory as per CERC Regulations. The issue has been discussed in 16th, 17th, 18th and 19th Commercial-Sub-Committee meetings and also raised in last 17th, 18th & 19th TCC / 18th, 20th, 21st & 22nd NRPC meetings. We have written several letters to PDD-J&K in this regard.

It was assured by PDD that LC would be opened shortly. However, LC has not been opened so far. LC details are as under:

LC for Rs 72.00 Cr p.m. (POC & Non POC) for one year is required.
POC : Rs. 43 Cr. / Non POC : Rs. 29 Cr.

PDD-J&K may update the status.

Item-18.2 Opening of LC by BYPL & BRPL (Delhi Discoms)

In spite of several reminders BRPL & BYPL have not renewed / enhanced the LC which expired on 31st March'2011. The details are as below:

LCs Rs 40.00 Cr p.m.(POC & Non POC) by BYPL and Rs 76.00 Cr p.m.(POC & Non POC) by BRPL, are required for one year .
BYPL : POC : Rs. 29 Cr. / Non POC : Rs. 11 Cr.
BRPL : POC : Rs. 46 Cr. / Non POC : Rs. 30 Cr.

BRPL & BYPL may update the status.

Item-18.3 Opening of LC by HPSEB

In spite of several reminders HPSEB has not renewed / enhanced the LC which expired on 31.11.11. The details are as below:

Rs 33.00 Cr p.m.(POC & Non POC), are required for one year.
POC : Rs. 17 Cr. / Non POC : Rs. 16 Cr.

HPSEB may update the status.

Item-18.4 Outstanding more than 60 days against BYPL

The total outstanding dues for more than 60 days against BYPL is Rs.116.96 Cr.
POC : Rs. 8.65 Cr. / Non POC :Rs. 108.31

BYPL may update the status.

Item-18.5 Outstanding more than 60 days against BRPL

The total outstanding dues for more than 60 days against BRPL is Rs.116.70 Cr.
POC : Rs. 22.88 Cr. / Non POC :Rs. 93.82

BRPL may update the status.

Item-18.6 Outstanding more than 60 days against UPPCL

The total outstanding dues for more than 60 days against UPPCL is Rs.33.96 Cr.
POC : Rs. 33.96 Cr. / Non POC : nil

UPPCL may update the status.

Item-18.7 Outstanding against TDS on Rajasthan discoms

JVVN : Rs. 10.38 Cr.
AVVN : Rs. 9.89 Cr.
JDVVN : Rs. 8.40 Cr.

The above amounts are withheld on a/c of TDS between April'11 to Aug.'11. Neither TDS certificate issued nor amount returned. Whereas POWERGRID has already deposited Income tax to the Tax authorities for which proof is already submitted to the competent authority. Therefore, the above amounts may be refunded to POWERGRID as the same is lying unpaid for more than 90 days showing outstanding in our books of account and inviting continuous audit Para.

Members may deliberate for resolving the issues urgently.

Item-19 Agenda by SJVN

Item-19.1 Non release of payment of SJVN bills

Following discom's are not complying to the CERC regulation and defaulted in making the payment within permissible period of 60 days. Beneficiaries wise outstanding towards the sale of power from NJHPS upto 11.01.2012 which is outstanding for more than 60 days is as under:-

BSES Rajdhani Power Limited	Rs. 56.07 Cr.
BSES Yamuna Power Limited	Rs. 34.94 Cr.
PDD, J&K	Rs. 15.36 Cr.
UPPCL	Rs. 35.17 Cr.

SJVN has regulated the power of BRPL & BYPL w.e.f 27.11.11 & 25.12.11 on account of non-payment of outstanding & current dues.

For UPPCL, since outstanding is huge so SJVN Ltd will be compelled to regulate their power, if payment is not received by 25.01.2012

Item-19.2 Non submission of revolving, irrevocable and confirmed Letter of Credit

Following beneficiaries have not submitted revolving, irrevocable and confirmed Letter of Credit required under CERC regulation:

- a. BRPL
- b. BYPL
- c. PDD, J&K

SJVN request that beneficiaries should open revolving, irrevocable and confirmed LC in compliance CERC guidelines within 30 days.

Item-19.3 Delay in release of payment of SJVN bills by DTL

The levy of Late Payment Surcharge charged on account of non payment by DTL is as per clause 20 of CERC Regulation 2009.

As on date total outstanding of DTL is Rs. 5.74 Crores, which includes principal amount of Rs. 5.50 Crores.

DTL should release the payment to avoid any future levy of LPS & submit the plan for the same.

Item-20 Excessive delay in release of THDCIL's payments and opening of LC by its beneficiaries: (Agenda by THDCIL)

THDCIL India Limited is supplying energy from its Tehri HPP and Koteshwar HEP generating stations. Despite repeated reminders certain beneficiaries are not making regular payments to THDCIL. The delay in release of payments has already caused severe cash crunch in THDCIL, as THDCIL is in loan repayment

mode. Also, as per 'THDCIL Rebate Scheme 2011-14', it is mandatory to open confirmed, revolving, irrevocable letter of credit in favour of THDCIL. Despite repeated reminders by THDCIL the Letter of Credit is yet to be opened by some beneficiaries.

The beneficiary-wise status is as under :

a. BRPL, Delhi :

BRPL has not released the payment of Energy Bills for the period May 2011 to December 2011, Income Tax, FERV etc. At present a total amount of Rs.65.85 Cr. is outstanding to be paid by BRPL, out of which Rs.52.44 Cr. is due for more than 60 days. Apart from this LC is yet to be opened by BRPL. Their representative had assured to clear all the outstanding dues and to open LC on priority, but BRPL has not yet fulfilled its commitment.

BRPL may take necessary action immediately to release the outstanding amount of Rs.65.85 Cr. without any further delay and inform specific dates by which they would clear the outstanding dues and open the LC.

b. BYPL, Delhi :

BYPL has not released the payment of Energy Bills for the period April 2011 to December 2011, Income Tax, FERV etc. At present a total amount of Rs.45.14 Cr. is outstanding to be paid by BYPL, out of which Rs.36.76 Cr. is due for more than 60 days. Apart from this LC is yet to be opened by BYPL. Their representative had assured to clear all the outstanding dues and to open LC on priority, but BYPL has not yet fulfilled its commitment.

BYPL may take necessary action immediately to release the outstanding amount of Rs.45.14 Cr. without any further delay and inform specific dates by which they would clear the outstanding dues and open the LC.

c. Rajasthan Discoms :

(i) JVVNL has not released the payment of Energy Bills for the period September 2011 to December 2011 and Income Tax etc. At present a total amount of Rs.21.60 Cr. is outstanding to be paid by JVVNL, out of which Rs.11.11 Cr. is due for more than 60 days.

(ii) AVVNL has not released the payment of Energy Bills for the period October 2011 to December 2011 and Income Tax. At present a total amount of Rs.9.29 Cr. is outstanding to be paid by AVVNL, out of which Rs.1.49 Cr. is due for more than 60 days.

(iii) JdVVNL has not released the payment of Energy Bills for the period September 2011 to December 2011 and Income Tax etc. At present a total amount of

Rs.11.78 Cr. is outstanding to be paid by JdVVNL, out of which Rs.2.63 Cr. is due for more than 60 days.

Rajasthan Discoms may take necessary action immediately to release the above outstanding amounts without any further delay and inform specific dates by which they would clear the outstanding dues.

d. UPPCL, Uttar Pradesh :

UPPCL has not released the payment of Energy Bills for the period August 2011 to December 2011, Income Tax etc. At present a total amount of Rs.340.07 Cr. is outstanding to be paid by UPPCL, out of which Rs.214.34 Cr. is due for more than 60 days. Since approx. 45% of monthly energy is billed to UPPCL, the major beneficiary, hence any delay in release of payments by UPPCL jeopardizes financial equilibrium of THDCIL.

UPPCL may take necessary action immediately to release the outstanding amount of Rs.340.07 Cr. without any further delay.

Item-21 Metering & Energy Accounting Arrangements at NTPC, Rihand during Rihand, Stage-III (2x500MW) infirm operation & subsequent commercial operation. (Agenda by NTPC)

Presently NTPC, Rihand comprises of 2x500 MW Stage-I & 2x500 MW Stage-II units which are under commercial operation. Now another 2x500 MW Rihand Stage-III (Unit-5 & Unit-6) is soon expected to be commissioned and brought under commercial operation (expected by Mar'2012). Single Line Diagram is attached at **Annexure-VI**. The units under Rihand-III shall soon start drawing commissioning power. Since each of commissioning power /infirm power/ firm power has different commercial implication, there is a need to identify and segregate the commissioning power, revenue from sale of infirm power & sale post CoD through segregated metering methodology for each of units of stage-III & stage-I&II.

In this regard till commencement of commercial operation of 2x500 MW Stage-III, it is proposed that the energy accounting at NTPC, Rihand under the combined unit operating situation involving both firm & infirm generation may be considered as per the following para:

a) Till neither of U# 5 or U#6 at NTPC, Rihand is commercial:

ESO for non-commercial units,

- ✓ U#5 = GT5 - ST5
- ✓ U#6 = GT6 - ST6

Where GT5, GT6 and ST5, ST6 are Generator Transformer & Station Transformer meters.

The ESO for the corresponding Units/Stages shall be treated as infirm power or commissioning power depending on status of the Unit and shall be accounted as UI.

b) After U#5 is commercial & U#6 not commercial at NTPC, Rihand:

ESO for non-commercial unit, U#6 = GT6 – ST6,
Where U#6 is ESO for Unit#6

$$\checkmark \text{ AG3 (St-III) = Quad Line1 + Quad Line 2 } \pm \text{BC3 } \pm \text{BC4} - \text{U\#6}$$

Where AG3 is ESO for Stage-III

Where BC3 & BC4 are Bus Couplers connecting St-II with St-III through Quad Line 1/2

$$\text{UI (St-III) = AG3-SG3}$$

Where UI (St-III) is UI for Stage-III (Commercial Units - Unit 5)

SG3 is SG of Stage –III

The ESO for the U#6 shall be treated as infirm power or commissioning power depending on its status and shall be accounted as UI.

c) After both U#5 & U#6 at NTPC, Rihand is declared commercial:

$$\checkmark \text{ AG3 (St-III) = Quad Line1 + Quad Line 2 } \pm \text{BC3 } \pm \text{BC4}$$

$$\text{UI (St-III) = AG3-SG3}$$

Where UI(St-III) is UI for Stage-III

SG3 is SG of Stage –III

Ex bus calculation for Rihand Stage-II

Ex bus calculation for Rihand Stage-II is proposed to modified to incorporate flows through BC3 & BC4 as :

400KV Allahabad 1+ 400KV Allahabad 2 \pm 400KV Bus Coupler 1 \pm 400 KV bus Coupler 2- (ST3-ST2) \pm 132 KV Bus Coupler \pm 11KV HVDC 2 (Aux PG Rihand) \pm 400KV BC3 \pm 400KV BC4

PGCIL may provide Energy Meters for Station Transformers and Bus Coupler Urgently.

Members may deliberate.

Item-22 TRANSMISSION ASSETS DECLARED UNDER COMMERCIAL OPERATION BY POWERGRID

The list of transmission lines and Substation declared under commercial

operation by POWERGRID from September 2011 to December 2011 is attached at **Annex-VII** for information of members.

Item-23 ERRONEOUS RECORDING OF DATA BY INTERFACE METERS (Agenda by NRLDC)

Item-23.1 Follow up cases

- i) *CT/CVT Supply to meter CH-10/NP-1611-A installed on 66kV IT park /mansadevi - Pinjore line at HVPNL Pinjore is not proper since 20.04.2009 even after replacement of meter. UT-Chadigarh to Pinjore line is T connected at mansadevi and there is no power flow from UT –Chandigarh to HVPNL, therefore it's readings were not used to compute the drawl during this week.*

During the 20th Commercial Sub-committee meeting held on 24.08.2011, representative of HVPNL informed that the problem could not be identified. It was proposed that a joint group with PGCIL should visit the site to identify the problem to which representative of POWERGRID agreed to look into the problem.

HVPNL & POWERGRID may update the status.

- ii) *The Standby meters (installed on lines) are reading less than the Main Meters (installed on Generators) by 4 to 5 % at BBMB Kotla. Letter was received from BBMB and wherein it was clarified that CVT is defective on 132 kV Ganguwal-Kotla line 1 & 2 and same will be replaced soonly. However difference is still in the standby set of meters compared to main & checks meters.*

During the 20th Commercial Sub-committee meeting held on 24.08.2011, representative of NRLDC informed that the losses was 4 to 5 % even after replacing CT & CVT. It was decided that the meter would be kept under observation.

NRLDC may update the status.

- iii) *Losses on 220 kV Jamalpur –Jalandher line 1 & 2 are 7.5-9 %. Jalandher end is reading very less. Necessary action may be taken for check up of CT/CVT supply at Jalandher end.*

During the 20th Commercial Sub-committee meeting held on 24.08.2011, representative of NRLDC opined that the high losses could be due to low power flow through the line and the meter need to keep under observation.

NRLDC may update the status.

- iv) *Losses CT/CVT Supply to meter HP-35/ NP-3121-A installed on 66 kV Pinjore at Parwano-HP is not proper since 1645 hr block of 16.11.09 to 2345*

hr block of 29.08.10. However being the standby meter, It's readings were not used to compute the drawl calculation.

During the 20th Commercial Sub-committee meeting held on 24.08.2011, representative of POWERGRID informed that the meter would be replaced by 27th Aug, 2011.

POWERGRID & NRLDC may update the status.

- v) *SEM data of UA-01/ NP-1887-installed on 400 kV Muzaffarnagar at Rishikesh-UPCL not received since 9.08.2010 therefore standby meter readings were used for drawl calculation.*

During the 20th Commercial Sub-committee meeting held on 24.08.2011, representative of UPCL was requested to look into the matter.

UPCL may update the status.

- vi) *CT/CVT Supply to SEM meter BB-60/NP-1436-A installed on 220/132kV ICT-2(220kV) at Kurukshetra-BBMB was not proper from 0000 Hrs of 23.08.2010 to 2345 Hrs of 17.04.2011. Therefore standby meter reading was used this week for drawl calculation.*

During the 20th Commercial Sub-committee meeting held on 24.08.2011, representative of BBMB informed that the meter had been replaced on 19.08.2011. It was decided to keep the meter under observation.

NRLDC may update the status.

- vii) *CT/CVT Supply to SEM meter NG-63/NP-6698-A installed on 400kV Lucknow (PG)-3 at Gorakhpur-PG was not proper from 1415 hrs of 08.07.2011 to 31.07.2011. However being the loss meter, its readings were not used to compute the drawl calculation*

During the 20th Commercial Sub-committee meeting held on 24.08.2011, representative of NRLDC intimated that losses were in the range of 3-4 %. However, permissible losses were 1 to 1.5 %. POWERGRID was requested to look into the matter.

POWERGRID may update the status.

- viii) *CT/CVT Supply to SEM meter NG-61/NP-6591-A installed on 400kV Gorakhpur-PG-3 at Lucknow (PG) was not proper from 1415 hrs of 08.07.2011 to 31.07.2011. However being the loss meter, its readings were not used to compute the drawl calculation.*

During the 20th Commercial Sub-committee meeting held on 24.08.2011, representative of NRLDC intimated that losses were in the range of 3-4 %.

However, permissible losses were 1 to 1.5 %. POWERGRID was requested to look into the matter.

POWERGRID may update the status.

- ix) *CT/CVT Supply to SEM meter UP-41/NP-1207-A installed on 220kV Tanakpur-1 at CB Gunj-UPPCL was not proper from 0000 hrs of 04.07.2011 to 1615 hrs of 31.07.2011. Therefore other end meter readings were used to compute the drawl calculation.*

During the 20th Commercial Sub-committee meeting held on 24.08.2011, representative of UPPCL was requested to look into the matter.

UPPCL may update the status.

- x) *Jhajjar - Daultabad line-1 has been LILO at CLP HVPNL since long back, till date meter not transferred and installed on at CLP end.*

During the 20th Commercial Sub-committee meeting held on 24.08.2011, representative of HVPNL was requested to look into the matter.

HVPNL may update the status.

- xi) *NRLDC stated that in 132 kV Dohna (UP) – Sitarganj (Uttarakhand) line, meter data at both ends differ both in magnitude and sign.*

During the 20th Commercial Sub-committee meeting held on 24.08.2011, UP and Uttarakhand were requested to look into the matter.

UP and Uttarakhand may update the status.

Item-23.2 New cases

- i. *CT/CVT Supply to SEM meter HY-06/NP-6678-A installed on ICT-1 (220 kV) at Gurgaon-PG was not proper (polarity problem) since 0000Hrs of 09.05.2011. However being the standby meter its readings were not used for compute the drawl calculation. **(Problem Continues)Action: Gurgaon-PG]***
- ii. *CT/CVT supply of SEM meter NG-65/NP-6650-A installed on HVDC-1 at Bhiwadi (PG) was not proper (read less) since 0000 hrs of 18.07.2011. However being the standby meter, its readings were not used for compute the drawl calculation. (Problem Continues) [Action: Bhiwadi- PG]*
- iii. *CT/CVT supply of SEM meter NG-15/NP-5043-A installed on 400 kV Patna-2 at Balia-PG was not proper. With respect to other end meter line losses are 8 to 10%. However being the standby meter, its readings were not used for compute the drawl calculation. **[Action: Balia- PG]***

- iv. *CT/CVT supply of SEM meter NG-27/NP-5345-A installed on 400 kV Biharsharif-2 at Balia-PG was not proper(read less) since 1100 hrs of 15.12.2011. However being the standby meter, its readings were not used to compute the drawl calculation. [Action: Balia- PG]*
- v. *Data of SEM meter HR-77 /NP-6707-A installed on Jhajjar-I at CLP - HVPNL was not received. However being the standby meter, its readings were not used for compute the drawl calculation. [Action: CLP – HVPNL]*
- vi. *SEM meter reading PU-52/NP-1804-A installed on 220 kV Kishenpur-2 at 220kV Sarna-PSEB was not proper (read less) since 1630 hrs of 13.12.2011. Therefore standby meter ireadings were used for compute the drawl calculation. [Action: Sarna- PSEB]*

DATE AND TIME OF THE NEXT MEETING

Next (22nd) meeting of the Commercial Sub-committee will be held in April, 2012. Date, time and Venue of the meeting shall be intimated later.

Annexure-I

Total sample of week considered =13 (3 OCTober2011 to 26 dec 2011)								
	Data Receiving status	OK	1 day delay	2 days delay	3 days delay	% Time data dealyed by 1 days	% Time data dealyed by 2 days	% Time data dealyed by 3 days
(A). NTPC:								
1	Singrauli STPS	13	0	0	0			
2	Rihand STPS-I	13	0	0	0			
3	Rihand STPS-II	13	0	0	0			
4	Auraiya CCPP	10	2	0	1			
5	Anta CCPP	12	1	0	0			
6	Dadri 400kV	11	2	0	0			
7	Unchahar TPS	9	4	0	0			
8	Badarpur TPS	11	2	0	0			
(B). NHPC:						15%	0%	1%
1	Bairasiul HEP	13	0	0	0			
2	Salal HEP	7	4	2	0			
3	Tanakpur HEP	12	1	0	0			
4	Chamera HEP	10	1	2	0			
5	Chamera - 2 HEP	7	3	3	0			
6	Uri HEP	6	5	2	0			
7	Dhauliganga HEP	10	1	1	1			
8	Dulhasti	11	2	0	0			
9	Sewa-II	2	5	4	1			
(C). NPC:						28%	18%	3%
1	RAPS-B	10	2	1	0			
2	RAPS-A	0	0	0	0			
3	RAPP-C	9	2	2	0			
4	NAPS	9	4	0	0			
(D). BBMB:						30%	11%	0%
1	Bhakra-L Bank	11	2	0	0			
2	Bhakra-R Bank	11	2	0	0			
3	Ganguwal HEP	13	0	0	0			
4	Kotla HEP	10	2	1	0			
5	Dehar HEP	12	0	1	0			
6	Pong HEP	12	1	0	0			
7	Panipat	11	2	0	0			
8	220kV Dhulkote	9	3	1	0			
9	220kV Hissar	13	0	0	0			
10	Jagadhari	12	1	0	0			
11	Samaypur	9	2	2	0			
12	Ballabgarh	12	1	0	0			
13	Bhiwani	5	5	3	0			
14	Charkhi Dadri	13	0	0	0			
15	Kurukshetra	10	1	2	0			
16	Narela	13	0	0	0			
17	Rohtak Road	11	1	1	0			
18	Jamalpur	13	0	0	0			
19	Jalandhar	10	2	0	1			

20	Sangrur	12	0	1	0			
21	Barnala	12	1	0	0			
22	MISS Ganguwal	9	1	1	0			
23	Sec-28 Ch'garh	9	3	0	1			
(E). UPPCL:						15%	6%	1%
1	400kV Muradnagar	5	5	2	1			
2	Noida sec.62	11	1	1	0			
3	Noida	12	1	0	0			
4	Greater Noida	9	3	1	0			
5	400 kV Muzaffarnagar	10	2	1	0			
6	220 kV Muzaffarnagana	9	2	1	0			
7	Sharanpur	6	6	1	0			
8	Pilibhit	5	7	1	0			
9	Dohna	3	8	2	0			
10	Nehtaur	3	10	0	0			
11	Kiratpur	3	10	0	0			
12	Nazibabad	8	5	0	0			
13	220kV Agra	7	4	1	0			
14	Bina	3	7	3	0			
15	Anpara	10	2	1	0			
16	400kV Lucknow, Sarojni nagar	13	0	0	0			
17	220kV Lucknow	13	0	0	0			
18	400kV Panki	12	1	0	0			
19	220kV Panki	12	1	0	0			
20	Sahupuri	2	9	1	1			
21	CB Gunj	3	8	1	0			
22	Biaikunthpur	12	1	0	0			
23	Rihand HEP	6	3	3	1			
24	Chandauli	2	9	1	1			
25	Khara HEP	9	1	2	1			
26	400kV Moradabad	13	0	0	0			
27	220kV Moradabad / Sambhal	3	9	0	0			
28	Mainpuri	13	0	0	0			
29	Naubasta	12	1	0	0			
30	220kV Chinhat	13	0	0	0			
31	220kV Fatehpur	11	1	1	0			
32	220kV Khurja	6	6	1	0			
33	Atrauli	9	3	0	1			
34	220kV Simbhaul	6	6	0	1			
35	400kV Sarnath	2	9	1	1			
36	400 kV Agra	6	5	2	0			
37	400 kV Unnao	11	2	0	0			
38	400 kV Gorakhpur	11	2	0	0			
39	400 kV Mau	11	2	0	0			
40	132 Kv Thakurdwara	10	2	0	0			
41	Dhampur	3	10	0	0			
42	Sahibabad	0	0	0	1			
43	Renusagar	12	1	0	0			
44	Sultanpur	9	3	1	0			
45	Lalitpur	0	0	0	0			

(F). UTTARANCHAL:						43%	7%	2%
1	Rishikesh	0	0	0	0			
2	Kulhal HEP	10	1	2	0			
3	Dhalipur HEP	11	2	0	0			
4	Dhakrani HEP	9	2	2	0			
5	Chibro HEP	7	4	2	0			
6	Khodri HEP	4	8	1	0			
7	Khatima	6	4	2	1			
8	Kichcha	5	5	2	0			
9	Chilla	10	2	1	0			
10	Kotdwar	8	3	2	0			
11	Roorkee	0	10	3	0			
12	Bhagwanpur	0	10	3	0			
13	Manglore	0	10	3	0			
14	Kalagarh	9	3	0	1			
15	132 kV Kashipur	5	5	1	1			
16	400 kV Kashipur	4	6	1	1			
17	Pantnagar	5	5	2	0			
18	Sitarganj(132/33)	13	0	0	0			
19	Laskar	0	10	3	0			
(G). RVPNL:						57%	19%	3%
1	Khetri	12	0	1	0			
2	132kV Rajgarh	13	0	0	0			
3	132kV Amarpura Thedi	9	2	2	0			
4	400kV Heerapura	11	0	1	0			
5	220kV Heerapura	0	0	0	0			
6	Bharatpur	9	2	0	1			
7	Alwar	11	1	1	0			
8	Kota	11	2	0	0			
9	Udaipur	7	4	2	0			
10	Bhilwara	9	2	2	0			
11	Dausa	9	2	2	0			
12	Morak	10	2	1	0			
13	Chiotgrh	13	0	0	0			
14	Sawaimadhopur	13	0	0	0			
15	Bagru	13	0	0	0			
16	Khandar	11	0	1	1			
17	Jodhpur	12	0	0	1			
18	Indira Gandhi Nagar (Jaipur)	7	4	2	0			
19	Chirwa	13	0	0	0			
20	Merta	11	1	1	0			
						13%	9%	2%
POWERGRID								
1	Kanpur	12	1	0	0			
2	Vindyalchal HVDC B/B	12	0	1	0			
3	Rihand HVDC	7	5	0	1			
4	Dadri HVDC	13	0	0	0			
5	Nalagarh	8	5	0	0			
6	Bassi	12	0	1	0			
7	Mandaula	13	0	0	0			
8	Abdullapur	8	0	3	2			
9	Hissar	12	1	0	0			

10	Ballabgarh	9	2	2	0			
11	Malerkotla	9	3	0	1			
12	Kishenpur	13	0	0	0			
13	Wagoora	12	0	1	0			
14	Moga	12	1	0	0			
15	Jalandhar	8	5	0	0			
16	Allahabad	13	0	0	0			
17	Bhiwadi	13	0	0	0			
18	Meerut	12	1	0	0			
19	Agra	11	1	1	0			
20	Mainpuri	9	3	1	0			
21	Patiala	11	1	1	0			
22	Kaithal	9	4	0	0			
23	Amritsar	12	0	1	0			
24	Lucknow	12	1	0	0			
25	Gorakhpur	12	1	0	0			
26	Bahadurgarh	6	3	3	1			
27	Balia	11	2	0	0			
28	Raebareli	11	2	0	0			
29	Bareilly	12	0	1	0			
30	Maharanibagh	11	1	1	0			
31	Fatehabad	12	0	1	0			
32	Ludhiana	9	3	1	0			
33	Sitarganj(132/33)	13	0	0	0			
34	Rorkee	13	0	0	0			
35	Kankroli	12	1	0	0			
36	Kota	10	2	1	0			
37	Bhinmal	13	0	0	0			
38	Sonepat	7	5	1	0			
39	Koteshwar	12	0	1	0			
40	Pithoragth	11	2	0	0			
	Gurgaon	12	1	0	0			
						15%	6%	1%
(I). UT								
CHANDIGARH:								
1	Sector-39	7	6	0	0			
2	Sector-52	7	6	0	0			
(J). DTL:						46%	0%	0%
1	Bawana	11	1	0	1			
2	Bamnauli	8	3	2	0			
3	Narela	13	0	0	0			
4	Patparganj	12	1	0	0			
5	Ghazipur	11	1	1	0			
6	PPCL	3	6	3	1			
7	Mundka	7	6	0	0			
(K). HVPNL:						52%	7%	2%
1	Pinjore	11	2	0	0			
2	Panchkula	11	2	0	0			
3	Hissar IA	10	3	0	0			
4	Bhiwani	2	8	3	0			
5	Hissar(Jindal)	13	0	0	0			
6	Mansa Devi	11	2	0	0			
7	Daultabad	8	4	0	0			
8	Khedar	1	8	4	0			
9	MahendraGarh	8	2	2	0			

(L) HPSEB:						39%	11%	0%
1	Jessore	7	5	1	0			
2	Bassi	8	3	1	1			
3	Mandi Bijni	2	5	5	0			
4	Pddhar	13	0	0	0			
5	132kV Hamirpur	9	4	0	0			
6	220kV Hamirpur	9	4	0	0			
7	Majri	8	4	1	0			
8	Kunihar	9	4	0	0			
9	Kangra	2	5	4	2			
10	Kangu	12	0	1	0			
11	Parwanoo	4	3	0	0			
12	Baddi	9	4	0	0			
13	Nangal	6	7	0	0			
(M) PDD (J&K)						30%	8%	2%
1	Pampore	5	6	2	0			
2	Udhampur	11	2	0	0			
3	Jammu	6	7	0	0			
4	Hiranagar	12	1	0	0			
5	Barn	10	2	1	0			
6	Baglihar	9	4	0	0			
7	Mahanpur	1	2	6	3			
8	Kathua	0	0	0	0			
(N). PSEB:						68%	20%	5%
1	132kV Ropar	8	5	0	0			
2	Shanan	13	0	0	0			
3	Kangra	2	5	4	2			
4	Chohal	7	5	1	0			
5	Pathankote	9	2	2	0			
6	132kV Sarna	8	4	1	0			
7	220kV Sarna	9	2	2	0			
8	Dasuya	11	1	1	0			
9	Govindgarh-2	10	1	2	0			
10	Mohali	11	2	0	0			
11	Mahilpur	7	5	1	0			
12	Jamsher	8	3	1	1			
14	Ranjit Sagar HEP	8	5	0	0			
15	Lehra Mohabbat	11	1	0	0			
16	Kartarpur	8	5	0	0			
17	Nakodar	8	4	0	1			
(O) NJPC						35%	10%	3%
1	Naptha Jhakri	13	0	0	0	0%	0%	0%
(P).THDC								
1	Koteshwar	9	4	0	0			
	Tehri	13	0	0	0			
(Q). DADRI RAILWAYS		22	4	0	0	22%	0%	0%
1	Dadri	9	2	1	1	11%	6%	6%
(R). MRPP		0	0	0	0			
1	AD Hydro	12	1	0	0	6%	0%	0%
2	Jajhhar	9	3	1	0	17%	6%	0%
3	Karcham,Wangtoo	7	4	2	0	22%	11%	0%
4	Shree Ram Cement	10	0	2	1	0%	11%	6%
5	Malana HEP	6	6	1	0	33%	6%	0%

Annexure-II

SEM data not received since long

Loc Code	Meter No	Station Name	Location of Installation	Constituent	Since
RA-06	NP-1069-B	RAPS-A	132 KV GANDHISAGAR	NPC	18.02.2008
UQ-31	NP-6668-A	Lalitpur-UPPCL	132 KV Rajghat	UPPCL	1-07-2011
RI-05	NP-1283-A	RIHAND STPS-I	132 KV V'CHAL/SINGRAULI	NTPC	25.06.2007
DL-35	NP-1124-A	BTPS	220 KV TRANSFER B/C	NTPC	2002
CH-19	NP-1426-A	KISHENGARH	66 KV PINJORE 1	BBMB	2008
CH-20	NP-1427-A	IT PARK	66 KV PINJORE 2	BBMB	2008
RJ-21	NP-1072-B	RPS HPS	132 KV GANDHI SAGAR	RRVPL	2004
RI-08	NP-1973-B	HVDC RIHAND	11 KV HVDC AUXILIARY 3	PGCIL	2002
RA-26	NP-1321-A	RAPS-B	220 KV RAPS-A	NPC	17.03.2008
UQ-28	NP-1898-A	NEW SAHARANPUR	132 KV BHAGWANPUR	UPPCL	15.12.2009
DA-28	NP-3057	Dadri_Th	220 Kv Bus-4 sectionaliser	NTPC	01.06.2010

Annexure-III**STATEMENT OF RLDC Fee & Charges -Dtd-17/10/2011**

Sl.No	Utility Name	Total Billed Amount (Oct 2010 to Mar 2011)	Admitted-Rs.	Outstanding Up to Mar 2011 (Bill-Admitted)
	ISTS			
1	Powergrid NRTS-I&II	2,92,14,329	2,92,14,324	0
2	POWERLINK	15,91,831	15,91,831	0
	Generating Station/ Seller			
1	Singrauli STPS	1,95,53,374	1,95,53,370	0
2	Rihand -I STPS	1,08,17,435	1,08,17,436	0
3	Rihand -II STPS	1,08,17,435	1,08,17,436	0
4	Dadri NCTPS	94,19,685	94,19,688	0
5	Dadri Stage-II,TPS	1,06,42,717	1,06,42,716	0
6	Unchahar-I TPS	57,50,591	57,50,592	0
7	Unchahar-II TPS	57,50,591	57,50,592	0
8	Unchahar-III TPS	39,16,044	39,16,044	0
9	Anta GPP	57,44,738	57,44,736	0
10	Auraiya GPP	78,76,569	78,76,566	0
11	Dadri GPP	93,30,404	93,30,402	0
12	Bairasiul HPS	36,53,966	36,53,689	0
13	Salal HPS	81,09,295	80,96,793	12,501
14	Tanakpur HPS	29,04,423	29,04,420	0
15	Chamera I HPS	67,98,904	67,98,905	0
16	Uri HPS	62,74,748	62,74,746	0
17	Chamera-II HPS	47,02,279	47,02,278	0
18	Dhauliganga HPS	45,27,560	45,27,458	0
19	Dulhasti HPS	54,88,513	54,88,461	0
20	SEWA-II HPS	31,29,810	31,29,810	0
21	Naptha Jhakri HPS	1,51,85,405	1,51,85,406	0
22	Tehri HPS	1,08,17,435	1,08,17,436	0
23	NAPS	59,25,310	59,25,310	0
24	RAPS -B	59,25,310	59,25,312	0
25	RAPS-C	59,25,310	59,25,312	0

26	AD HPS	37,58,797	37,58,796	0
27	IGSTPS	0	0	0
	Distribution Licensee / Buyer			
1	Chandigarh Control Area	33,61,809	33,61,809	0
2	Delhi Control Area	2,98,71,485	2,98,71,485	0
3	Haryana Control Area	1,23,72,000	1,23,72,001	0
4	HP Control Area	1,28,81,978	1,28,81,545	0
5	J&K Control Area	1,40,23,331	1,40,23,331	0
6	Punjab Control Area	1,84,65,934	1,84,65,933	0
7	** Rajasthan Control Area	1,69,09,829	1,69,09,833	0
8	UP Control Area	4,10,06,954	4,10,06,954	0
9	Railways	28,63,576	28,63,578	0
10	Uttarakhand Control Area	76,73,051	76,73,052	0
11	Powergrid(HVDC Rihand)	10,27,850	10,27,849	0
12	Powergrid(HVDC Dadri)	10,66,394	10,66,394	0
	Total	38,50,77,000	38,50,63,631	

Annexure-IV

STATEMENT OF RLDC Fee & Charges -Dtd-11/01/2012

Sl.No	Utility Name	Total Billed Amount (April 2011 to Oct-2011)	Admitted-Rs.	Outstanding (Bill-Admitted)
	ISTS			
1	Powergrid NRTS-I&II	25020683	25020682	0
2	POWERLINK	1320784	1320781	0
	Generating Station/ Seller			
1	Singrauli STPS	15506423	15506375	0
2	Rihand -I STPS	8554384	8554383	0
3	Rihand -II STPS	8554384	8554383	0
4	Dadri -I ,NCTPS	7442058	7442057	0
5	Dadri II,NCTPS	8415344	8415343	0
6	Unchahar-I TPS	4522202	4522203	0
7	Unchahar-II TPS	4522202	4522203	0
8	Unchahar-III TPS	3062274	3062272	0
9	Anta G.P.S	4517544	4517542	0
10	Auraiya G.P.S	6214050	6214049	0
11	Dadri G.P.S	7371008	7371007	0
12	Bairasiul HPS	2853713	2853534	0
13	Salal HPS	6399252	6399102	0
14	Tanakpur HPS	2257228	2257221	0
15	Chamera-I HPS	5356447	5356170	0
16	Uri HPS	4939324	4939271	0
17	Chamera-II HPS	3687957	3687732	0
18	Dhauliganga HPS	3548917	3548739	0
19	Dulhasti HPS	4313641	4313340	0
20	Sewa-II,HPS	2436590	2436538	0
21	SJVNL LTD ,HPS	12030404	12030404	0
22	Tehri,HPS	8554384	8554382	0
23	NAPS	4661243	4661243	0

24	RAPS -B	4661243	4661243	0
25	RAP-C	4661243	4661244	0
26	ADHPL,HPS	2937137	2937137	0
27	IGSTPS	5078365	5078364	0
28	Koteshwer HPS	2240721	2240718	0
29	JKHCL,HPS	4512135	4512134	0
30	Malana,II HEP	627634	313817	3,13,817
	Shree Cement Ltd.	722668	722670	0
	Distribution Licensee / Buyer			
1	Chandigarh Control Area	2899788	2899789	0
2	Delhi Control Area	25652131	25652126	0
3	Haryana Control Area	12321739	12321740	0
4	HP Control Area	10112475	10112232	0
5	J&K Control Area	10914625	7507600	34,07,025
6	Punjab Control Area	16001647	16001646	0
7	Rajasthan Control Area	13698644	10461196	32,37,448
8	UP Control Area	34337894	34337894	0
9	Railways	2248710	2248710	0
10	Uttarakhand Control Area	6361868	6361822	0
11	Powergrid(HVDC Rihand)	1607517	1607517	0
12	Powergrid(HVDC Dadri)	1607709	1607709	0
	Total	32,92,68,333	32,23,08,267	

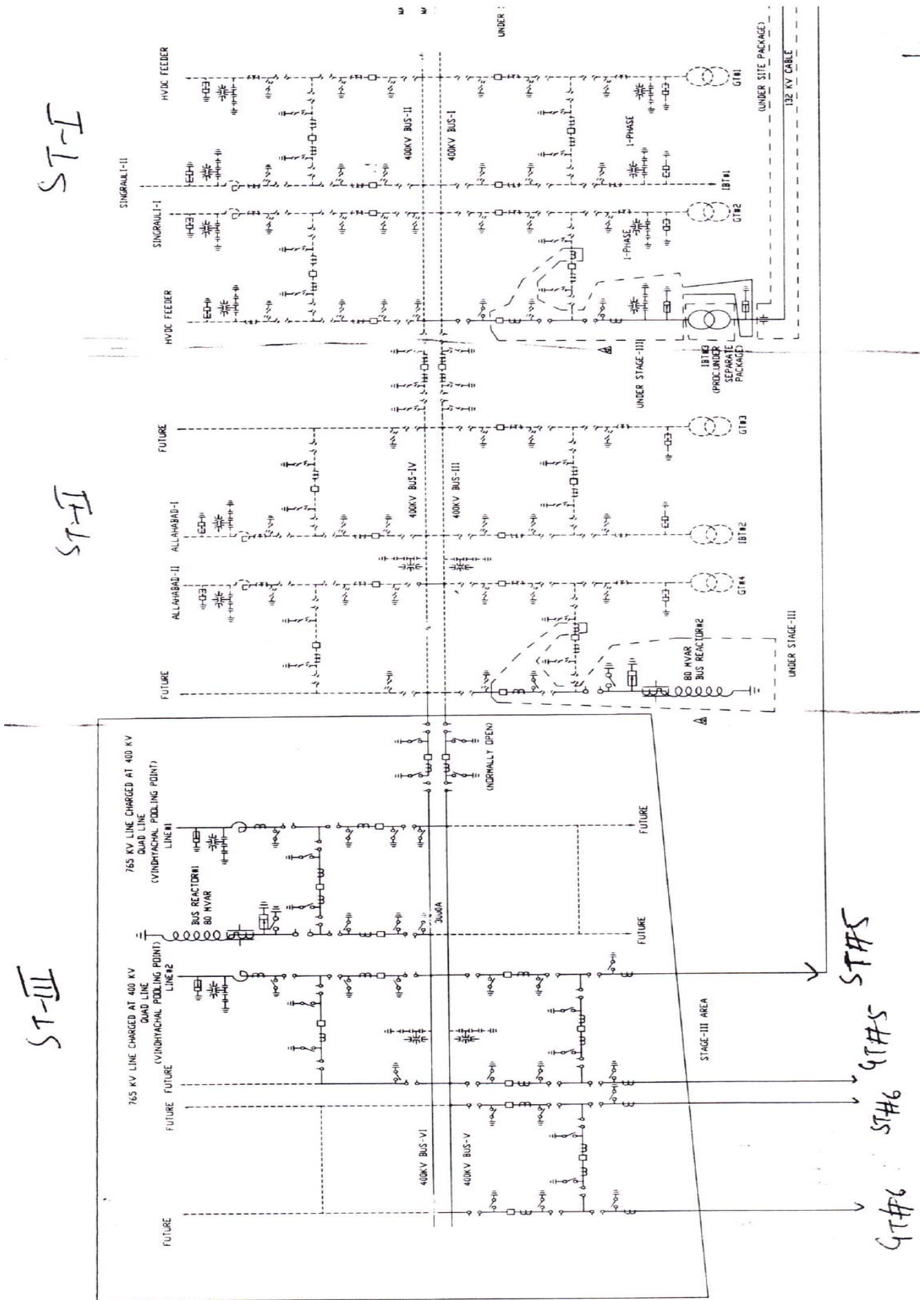
Annexure-V A**LC status of RLDC Fee and Charges****Utilities who have opened the LC**

	Name of the Utilities	LC Amount (In Lakhs)
Name of the Generating Station/ Seller	Singrauli STPS	23
	Rihand -I STPS	94
	Rihand -II STPS	
	Dadri NCTPS	
	Dadri Stage-2	
	Unchahar-I TPS	
	Unchahar-II TPS	
	Unchahar-III TPS	
	Anta Gas	
	Auraiya Gas	
	Dadri Gas	
	Nathpa-Jhakri	18
	Tehri	13
	Distribution Licences	Uttarakhand Control Area

Annexure-V B**LC status of RLDC Fee and Charges****Utilities who are required to open the LC**

	Name of the Utilities	LC Amount (In Lakhs)
Name of the ISTS	Powergrid NRTS-I&II	36
	POWERLINK	2
Name of the Generating Station/ Seller	Bairasiul	4
	Salal	10
	Tanakpur HPS	3
	Chamera HPS	8
	Uri HPS	7
	Chamera2 HPS	6
	Dhauliganga	5
	Dulhasti	6
	Sewa-2	4
	NAPS	7
	RAPS -B	7
	RAP-C	7
	ADHPL	4
	IGSTPS	8
	Koteshwer HPS	3
	JKHCL,HPS	10
	Shree Cement	4
Malana-II	3	
Name of the Distribution Licensee / Buyer	Chandigarh Control Area	4
	Delhi Control Area	36
	Haryana Control Area	17
	HP Control Area	16
	J&K Control Area	17
	Punjab Control Area	22
	Rajasthan Control Area	21
	UP Control Area	50
	Railways	3
	Powergrid(Rihand)	2
Powergrid(Dadri)	2	

Annexure-VI-



Annexure-VII

TRANSMISSION ELEMENT DATA ADDED as on 31.12.2011							
SI No.	TRANS LINES	Type of Tower	Ckt. Kms. PG Portion	Conductor type	NSC	Date of Commissioning	Date of Commercial Operation
1	400KV ALLD-FATEHPUR-III	D/C	155.932	Twin Moose	2	31-12-2011	01-01-2012
2	400KV KNP-FATEHPUR-II	D/C	98.804	Twin Moose	2	31-12-2011	01-01-2012
3	400KV BHIWADI-NIMRANA-I	D/C	48.428	Twin Moose	2	31-12-2011	01-01-2012
4	400KV BHIWADI-NIMRANA-II	D/C	48.428	Twin Moose	2	31-12-2011	01-01-2012
5	220KV FTHPR(PG)-FTHPR(UP)-I	D/C	5.284	Zebra	1	31-12-2011	01-01-2012
6	220KV FTHPR(PG)-FTHPR(UP)-II	D/C	5.284	Zebra	1	31-12-2011	01-01-2012
7	220KV FTHPR(PG)-KNP(S)	D/C	6.170	Zebra	1	31-12-2011	01-01-2012
8	220KV FTHPR(PG)-NAUBASTA	D/C	6.170	Zebra	1	31-12-2011	01-01-2012

SUBSTATION ELEMENT DATA ADDED as on 31.12.2011						
SI No.	Name of S/Stn	Voltage Level	No. of ICTs/ Switched Bus & line Reactors/ SVC	MVA Capacity of ICT/MVAR of Bus Reactor/SVC	Date of Commissioning	Date of Commercial Operation
1	RAIBAREILLY(220/132)	220/132KV	ICT-I	100MVA	30.09.11	01.10.11
2	LUCKNOW	400KV	B/R	125MVAR	30.09.11	01.10.11
3	BALIA	400KV	B/R	125MVAR	31.10.11	01.11.11
4	FATEHPUR	400KV	B/R-I	125MVAR	31-Dec-11	1-Jan-12
5	FATEHPUR	400KV	B/R-II	125MVAR	31-Dec-11	1-Jan-12
6	FATEHPUR	400/220KV	ICT-I	315MVA	31-Dec-11	1-Jan-12
7	FATEHPUR	400/220KV	ICT-II	315MVA	31-Dec-11	1-Jan-12
8	NIMRANA	400/220KV	ICT-I	315MVA	31-Dec-11	1-Jan-12